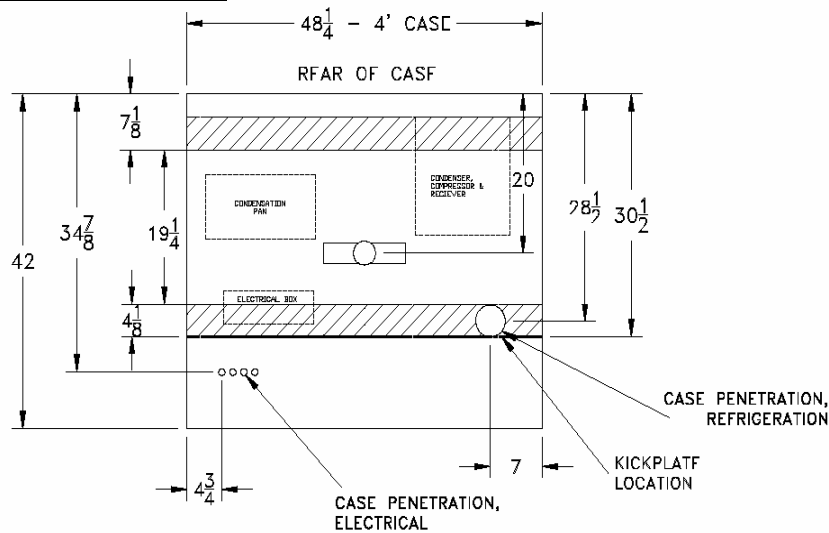
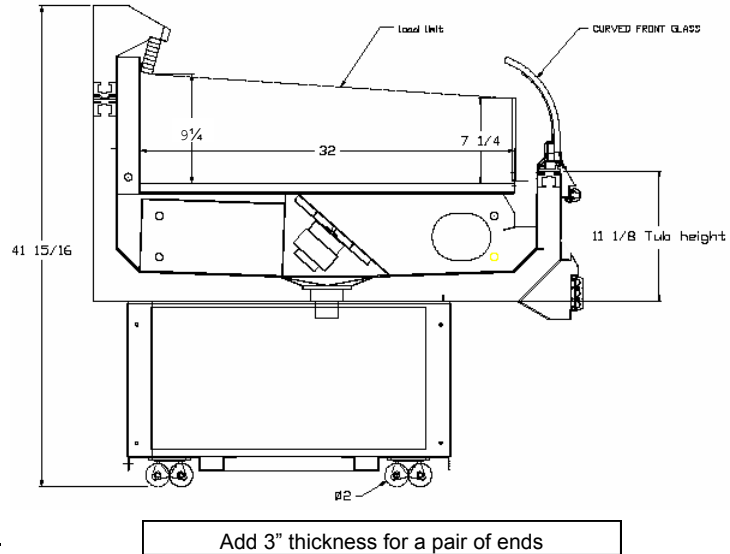


<b>CASE DATA AMPS</b>	<b>4'</b>
Power Supply	115V/60/1
Anti-Sweat Amps	0.1
Fan Amps	0.7
Min. Circuit Amps	20.9
Maximum OCP	25
Condensing Unit Amps	9.7
Ref. Cycle Amps	18.5
Defrost Cycle Amps	8.8
Refrigerant	R-404A
Maximum OCP	25
Horse Power	0.5
All electrical data based on 115V	

DEFROST CONTROLS			
Defrost	Per Day	Fail Safe	Termination
Off Cycle	4	45 min	45°F
Set defrost intervals for every 6 hours			



Type I refrigerator, intended for use in an area where the environmental conditions are controlled and maintained such that conditions do not exceed 75°F and 55% relative humidity. Kysor/Warren®, whose policy is one of continuous improvement, reserves the right to change at anytime, specifications, design or prices without incurring obligation. Dual-Jet® and Air Defrost® are registered trademarks of Kysor/Warren®.

BTUH / per FT	
+24°F	
STD Fan	500
PSC Fan	490
ECM Fan	480
<b>NOTE:</b> For sizing conventional/ individual condensing units, add 8% to BTUH load.	

CAPACITIES		
		4'
Facing Area	10.72 ft <sup>2</sup>	
Cubic Capacity	7.37 ft <sup>3</sup>	
Evap Temp	Discharge Air Velocity (1 hr. after defrost)	Discharge Air Temp
+24°F	225 FPM	21-25°F

The above case model, has case lengths that are UL and NSF approved.



Kysor/Warren  
5201 Transport Blvd  
Columbus, GA 31907

800-866-5596 phone  
706-568-8990 fax

[www.kysorwarren.com](http://www.kysorwarren.com)

Issue: 4.29.2008

Applications:



**QM1LVC - Single Deck - Self-Contained**

Specification Sheet

